

LED.CO.UK

THE ATLAS RANGE



ABOUT US

LED.CO.UK is an International supplier of LED lighting technology. We specialise in complete energy efficient lighting solutions for both new and retrofit applications. We provide the highest quality LED based products by integrating premium components to ensure reliability and optimum performance.

Our service delivers a full bespoke package from site surveys, lighting design, the provision of leading edge technology and installation.

THE ATLAS RANGE

At LED.CO.UK we provide a comprehensive range of lighting options for all your commercial applications each tailored to meet the operating and design parameters required.

Lighting design services are available to ensure designs meet BS EN 12464-1:2011, and Society of Light and Lighting: Code for Lighting 2012. We can also provide a cost of ownership analysis to illustrate savings which can be made versus conventional lighting.

From first point of contact to final sign off we aim to support our customers through the complete process so all details are fully dealt with to maximise performance. Within this brochure we have included our complete Atlas Range of LED Downlights. To view our full range of LED products please visit www.led.co.uk.

ATLAS MINI

- Instant on - no flicker
- Environmentally Friendly - No mercury or lead enters the environment
- No RF and electronic magnetic interference
- Over 50,000 hours life span



The Atlas Mini is a 104mm diameter low void downlight which uses a Samsung LED engine. The heatsink is constructed from die-cast aluminium complete with aluminium bezel and reflector. The heatsink features spring arms which allows the downlight to be installed with ease.

The Atlas Mini is available in outputs from 630lm, 810lm and 1,080lm outputs.

		ATS-M	-XX	-X	-XX	-X	-X
Wattage			↑	↑	↑	↑	↑
7 W	07	=====					
9 W	09	=====					
12 W	12	=====					
Colour							
White	W	=====					
Special RAL Colour	S	=====					
Colour Temperature							
3000K (Warm White)	3K	=====					
4000K (Neutral White)	4K	=====					
5000K (Cool White)	5K	=====					
Dimming							
Fixed output	0	=====					
1-10V Dimming	1	=====					
DALI Dimming	2	=====					
Mains Dimming	3	=====					
Switch Dimming	4	=====					
Emergency							
Not Required	0	=====					
3 Hour Facility	1	=====					
3 Hour Self Test	2	=====					
3 Hour Central Test	3	=====					

Example of Code:

ATS-M-09-W-3K-0-0

Wattage:	9 W
Colour:	White
Colour Temp.:	3000K
Dimming:	Fixed output
Emergency:	Not Required



Atlas Mini			
Power	7 W	9 W	12 W
Dimensions	Ø104 x 25.8mm		Cutout: 90mm
Installation	Recessed		
Voltage	220-240Vac		

Performance			
Power	7 W	9 W	12 W
Exit Lumens (lm)	630 lm	810 lm	1080 lm
Efficiency	90.0 lm/cW		
Beam Angle	90°		
Colour Rendering	Ra>80/90		
Colour Temperature	3000K / 4000K / 5000K		
Dimming	1-10V / DALI		
Operating Temp.	-40°C to 50°C		
Warranty	5 Years		

ATLAS

- Instant on - no flicker
- Environmentally Friendly - No mercury or lead enters the environment
- No RF and electronic magnetic interference
- Over 50,000 hours life span



The Atlas is a 140mm diameter low void downlight which uses a Samsung LED engine. The heatsink is constructed from die-cast aluminium complete with aluminium bezel and reflector. The heatsink features spring arms which allows the downlight to be installed with ease.

The Atlas is available in outputs from 810lm, 1,080lm and 1,350lm outputs.

		ATS-S	-XX	-X	-XX	-X	-X
Wattage			↑	↑	↑	↑	↑
9 W	09	=====					
12 W	12	=====					
15 W	15	=====					
Colour							
White	W	=====					
Special RAL Colour	S	=====					
Colour Temperature							
3000K (Warm White)	3K	=====					
4000K (Neutral White)	4K	=====					
5000K (Cool White)	5K	=====					
Dimming							
Fixed output	0	=====					
1-10V Dimming	1	=====					
DALI Dimming	2	=====					
Mains Dimming	3	=====					
Switch Dimming	4	=====					
Emergency							
Not Required	0	=====					
3 Hour Facility	1	=====					
3 Hour Self Test	2	=====					
3 Hour Central Test	3	=====					

Example of Code:

ATS-S-09-W-3K-0-0

Wattage:	9 W
Colour:	White
Colour Temp.:	3000K
Dimming:	Fixed output
Emergency:	Not Required



Atlas			
Power	9 W	12 W	15 W
Dimensions	Ø140 x 27mm		Cutout: 125mm
Installation	Recessed		
Voltage	220-240Vac		

Performance			
Power	9 W	12 W	15 W
Exit Lumens (lm)	810 lm	1080 lm	1350 lm
Efficiency	90 lm/cW		
Beam Angle	90°		
Colour Rendering	Ra>80/90		
Colour Temperature	3000K / 4000K / 5000K		
Dimming	1-10V / DALI		
Operating Temp.	-40°C to 50°C		
Warranty	5 Years		

ATLAS MAX

- Instant on - no flicker
- Environmentally Friendly - No mercury or lead enters the environment
- No RF and electronic magnetic interference
- Over 50,000 hours life span



The Atlas Max is a 180mm diameter low void downlight which uses a Samsung LED engine. The heatsink is constructed from die-cast aluminium complete with aluminium bezel and reflector. The heatsink features spring arms which allows the downlight to be installed with ease.

The Atlas Max is available in outputs from 1,080lm, 1,350lm, 1,620lm and 2,070lm outputs.

		ATS-X	-XX	-X	-XX	-X	-X
Wattage							
12 W	12						
15 W	15						
18 W	18						
23 W	23						
Colour							
White	W						
Special RAL Colour	S						
Colour Temperature							
3000K (Warm White)	3K						
4000K (Neutral White)	4K						
5000K (Cool White)	5K						
Dimming							
Fixed output	0						
1-10V Dimming	1						
DALI Dimming	2						
Mains Dimming	3						
Switch Dimming	4						
Emergency							
Not Required	0						
3 Hour Facility	1						
3 Hour Self Test	2						
3 Hour Central Test	3						

Example of Code:

ATS-X-12-W-3K-0-0

Wattage:	12 W
Colour:	White
Colour Temp.:	3000K
Dimming:	Fixed output
Emergency:	Not Required



Atlas Max					
Power	12 W	15 W	18 W	23 W	
Dimensions	Ø180mm x 29mm		Cutout: 160mm		
Installation	Recessed				
Voltage	220-240Vac				

Performance				
Power	12 W	15 W	18 W	23 W
Exit Lumens (lm)	1,080 lm	1,350 lm	1,620 lm	2,070
Efficiency	90 lm/cW			
Beam Angle	90°			
Colour Rendering	Ra>80/90			
Colour Temperature	3000K / 4000K / 5000K			
Dimming	1-10V / DALI			
Operating Temp.	-40°C to 50°C			
Warranty	5 Years			

ATLAS DEEP MINI

- Instant on - no flicker
- Environmentally Friendly - No mercury or lead enters the environment
- No RF and electronic magnetic interference
- Over 50,000 hours life span



The Atlas Deep Mini is a 104mm diameter low void downlight which uses a Samsung LED engine. The Atlas Deep has a 10mm recessed bezel feature for anti-glare cutoff. The heatsink is constructed from die-cast aluminium complete with aluminium bezel and reflector. The heatsink features spring arms which allows the downlight to be installed with ease.

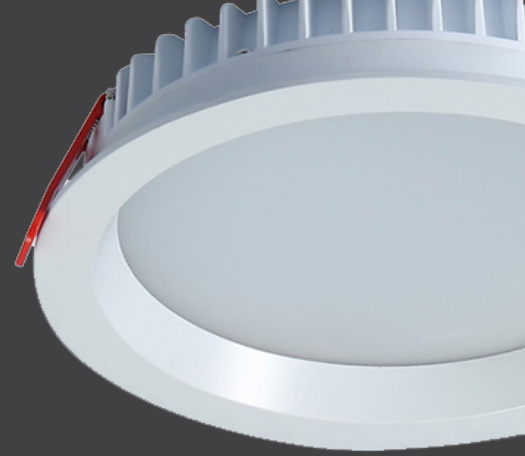
The Atlas Deep Mini is available in outputs from 630lm, 910lm and 1,080lm outputs.

		ATS-D-M	-XX	-X	-XX	-X	-X
Wattage							
7 W	07						
9 W	09						
12 W	12						
Colour							
White	W						
Special RAL Colour	S						
Colour Temperature							
3000K (Warm White)	3K						
4000K (Neutral White)	4K						
5000K (Cool White)	5K						
Dimming							
Fixed output	0						
1-10V Dimming	1						
DALI Dimming	2						
Mains Dimming	3						
Switch Dimming	4						
Emergency							
Not Required	0						
3 Hour Facility	1						
3 Hour Self Test	2						
3 Hour Central Test	3						

Example of Code:

ATS-D-M-09-W-3K-0-0

Wattage:	9 W
Colour:	White
Colour Temp.:	3000K
Dimming:	Fixed output
Emergency:	Not Required



Atlas Deep Mini			
Power	7 W	9 W	12 W
Dimensions	Ø104 x 36mm		Cutout: 90mm
Installation	Recessed		
Voltage	220-240Vac		

Performance			
Power	7 W	9 W	12 W
Exit Lumens (lm)	630 lm	810 lm	1080 lm
Efficiency	90.0 lm/cW		
Beam Angle	90°		
Colour Rendering	Ra>80/90		
Colour Temperature	3000K / 4000K / 5000K		
Dimming	1-10V / DALI		
Operating Temp.	-40°C to 50°C		
Warranty	5 Years		

ATLAS DEEP

- Instant on - no flicker
- Environmentally Friendly - No mercury or lead enters the environment
- No RF and electronic magnetic interference
- Over 50,000 hours life span



The Atlas Deep is a 140mm diameter low void downlight which uses a Samsung LED engine. The Atlas Deep has a 10mm recessed bezel feature for anti-glare cutoff. The heatsink is constructed from die-cast aluminium complete with aluminium bezel and reflector. The heatsink features spring arms which allows the downlight to be installed with ease.

The Atlas Deep is available in outputs from 810lm, 1,080lm and 1,350lm outputs.

		ATS-D-S	-XX	-X	-XX	-X	-X
Wattage							
9 W	09						
12 W	12						
15 W	15						
Colour							
White	W						
Special RAL Colour	S						
Colour Temperature							
3000K (Warm White)	3K						
4000K (Neutral White)	4K						
5000K (Cool White)	5K						
Dimming							
Fixed output	0						
1-10V Dimming	1						
DALI Dimming	2						
Mains Dimming	3						
Switch Dimming	4						
Emergency							
Not Required	0						
3 Hour Facility	1						
3 Hour Self Test	2						
3 Hour Central Test	3						

Example of Code:

ATS-D-S-09-W-3K-0-0

Wattage:	9 W
Colour:	White
Colour Temp.:	3000K
Dimming:	Fixed output
Emergency:	Not Required



Atlas Deep			
Power	9 W	12 W	15 W
Dimensions	Ø140 x 38mm		Cutout: 125mm
Installation	Recessed		
Voltage	220-240Vac		

Performance			
Power	9 W	12 W	15 W
Exit Lumens (lm)	810 lm	1080 lm	1350 lm
Efficiency	90 lm/cW		
Beam Angle	90°		
Colour Rendering	Ra>80/90		
Colour Temperature	3000K / 4000K / 5000K		
Dimming	1-10V / DALI		
Operating Temp.	-40°C to 50°C		
Warranty	5 Years		

ATLAS DEEP MAX

- Instant on - no flicker
- Environmentally Friendly - No mercury or lead enters the environment
- No RF and electronic magnetic interference
- Over 50,000 hours life span



The Atlas Deep Max is a 180mm diameter low void downlight which uses a Samsung LED engine. The Atlas Deep has a 10mm recessed bezel feature for anti-glare cutoff. The heatsink is constructed from die-cast aluminium complete with aluminium bezel and reflector. The heatsink features spring arms which allows the downlight to be installed with ease.

The Atlas Deep Max is available in outputs from 1,080lm, 1,350lm, 1,620lm and 2,070lm outputs.

		ATS-D-X	-XX	-X	-XX	-X	-X
Wattage							
12 W	12						
15 W	15						
18 W	18						
23 W	23						
Colour							
White	W						
Special RAL Colour	S						
Colour Temperature							
3000K (Warm White)	3K						
4000K (Neutral White)	4K						
5000K (Cool White)	5K						
Dimming							
Fixed output	0						
1-10V Dimming	1						
DALI Dimming	2						
Mains Dimming	3						
Switch Dimming	4						
Emergency							
Not Required	0						
3 Hour Facility	1						
3 Hour Self Test	2						
3 Hour Central Test	3						

Example of Code:

ATS-D-X-12-W-3K-0-0

Wattage:	12 W
Colour:	White
Colour Temp.:	3000K
Dimming:	Fixed output
Emergency:	Not Required



Atlas Deep Max					
Power	12 W	15 W	18 W	23 W	
Dimensions	Ø180 x 41mm		Cutout: 160mm		
Installation	Recessed				
Voltage	220-240Vac				

Performance				
Power	12 W	15 W	18 W	23 W
Exit Lumens (lm)	1,080 lm	1,350 lm	1,620 lm	2,070
Efficiency	90 lm/cW	90 lm/cW	90 lm/cW	90 lm/cW
Beam Angle	90°			
Colour Rendering	Ra>80/90			
Colour Temperature	3000K / 4000K / 5000K			
Dimming	1-10V / DALI			
Operating Temp.	-40°C to 50°C			
Warranty	5 Years			

sales@led.co.uk
www.led.co.uk

LED.CO.UK